

OUTDOOR

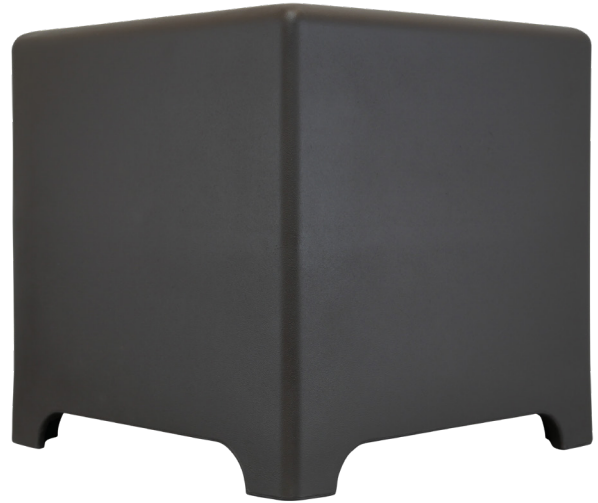
SONANCE LANDSCAPE SERIES

HS12T SUB

Overview

The HS12T SUB is the first generation of Sonance Landscape Series to include a wide bandwidth Sonance Laminated Core Transformer with an adjustable tap, making it flexible and powerful for any outdoor landscape application. The SLS Sat and Sub system provides a superior landscape aesthetic with its discreet design and finish. The system blends into the terrain along walkways, tucked into planter beds, mounted up in the trees, and anywhere you want your audio to reach.

The all new Sonance SLS speakers and subwoofers are redesigned and engineered from the ground up for ultimate performance in any outdoor space, paving the way for premium audio in shared outdoor environments. Designed using performance features borrowed from both Sonance Professional Series and Visual Performance Extreme, Sonance Landscape Series boasts a completely immersive and performance-driven outdoor experience.



HS12T SUB

Key Features

Aesthetics

- Designed to blend in with landscape surroundings
- Color-molded composite construction won't chip, peel or fade over time

Performance

- Part of a scalable system that delivers perfectly even coverage and unequalled sonic performance throughout any space
- Polypropylene cone woofer with a Santoprene rubber surround for high excursion Sonance Laminated Core Transformer (SLCT) with an adjustable Tap for 300W, 150W, 75W, (38W 70V), and 8 ohm installations

Installation

- Design to be hidden inside large planter pots or on hardscape surfaces

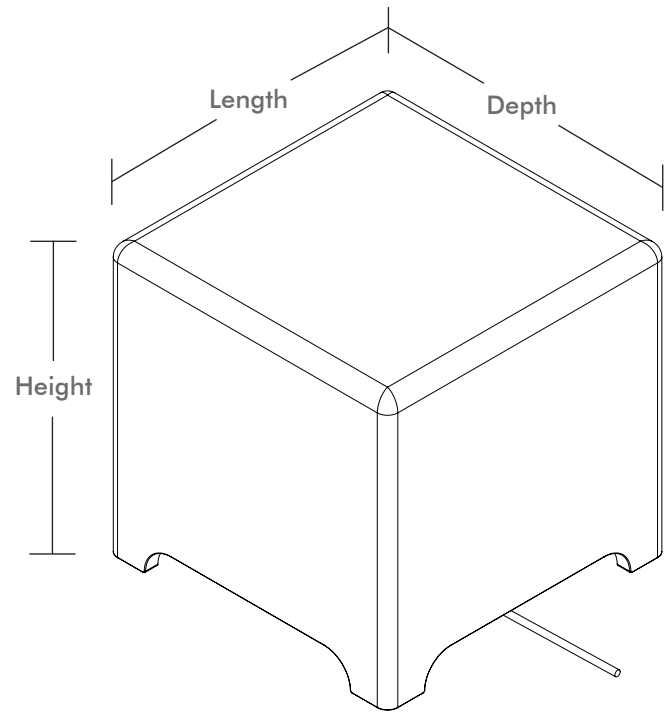
Environmental

- Color-molded composite construction won't chip, peel or fade over time
- UV-resistant, low density polyethylene enclosure
- Robust construction to handle extreme conditions
- IP66 and MIL STD 810 rated






Specifications

SKU:	93373
Woofers:	12" (305mm) polypropylene cone with a Santoprene™ rubber surround
Frequency Response:	22Hz - 100Hz ±3dB
Transformer Taps:	300W, 150W, 75W, (70V) 300W, 150W (100V) 8 Ohms
Crossover Frequency:	100Hz
Enclosure Material:	Low density polyethylene (LDPE)
Finish:	Dark brown textured canopy
Dimensions:	16.14" x 16.14" x 16.14"
(L x H x D)	(410mm x 410mm x 410mm)
Shipping Weight:	64.14 lbs (30.0kg)



Recommended Products

Sonamp DSP 2-750 MKII Amplifier (Each)	93379	
LS4T SAT (Each)	93369	
LS6T SAT (Each)	93370	

LIMITED FIVE (5) YEAR WARRANTY

Sonance warrants to the first end-user purchaser that this Sonance-brand product ("Product"), when purchased from an authorized Sonance Dealer/Distributor, will be free from defective workmanship and materials for the period stated below. Sonance will at its option and expense during the warranty period, either repair the defect or replace the Product with a new or remanufactured Product or a reasonable equivalent. Warranty Period for this Product: Five (5) years from the date on the original sales receipt or invoice or other satisfactory proof of purchase.



©2018 Sonance. All rights reserved.

Sonance and Visual Performance are registered trademarks of Dana Innovations.

Due to continuous product improvement, all features and specifications are subject to change without notice.

For the latest Sonance product specification information visit our website: www.sonance.com

SONANCE • 991 Calle Amanecer • San Clemente, CA 92673 USA
(949) 492-7777 • FAX: (949) 361-5151 • Technical Support: (949) 492-7777

www.sonance.com